

Specification

Nominal Voltage	12V	
Nominal Capacity(20HR)	38.0AH	
Dimension	Length	197±2mm (7.76 inches)
	Width	165±2mm (6.50 inches)
	Container Height	170±2mm (6.69 inches)
	Total Height (with Terminal)	170±2mm (6.69 inches)
Approx Weight	Approx 13.5 kg (29.77lbs)	
Terminal	T6	
Container Material	ABS	
Rated Capacity	38.0 AH/1.90A	(20hr , 1.80V/cell, 25°C/77°F)
	35.0AH/3.50A	(10hr, 1.80V/cell, 25°C/77°F)
	30.7 AH/6.14A	(5hr, 1.75V/cell, 25°C/77°F)
	27.1 AH/9.02A	(3hr, 1.75V/cell, 25°C/77°F)
	22.5 AH/22.5A	(1hr, 1.60V/cell, 25°C/77°F)
Max. Discharge Current	380A (5s)	
Internal Resistance	Approx 10.5mΩ	
Operating Temp. Range	Discharge	-20~55°C (-4~131°F)
	Charge	0~40°C (32~104°F)
	Storage	-20~50°C (-4~122°F)
Nominal Operating Temp. Range	25±3°C (77±5°F)	
Cycle Use	Initial Charging Current less than 12A.	
	Voltage 14.1V~14.4V (14.1V is optimum) at 25°C(77°F).	
Standby Use	No limit on Initial Charging Current .Voltage 13.5V~13.8V	
	(13.5V is optimum) at 25°C(77°F) . Coefficient -18mV/°C	
Capacity affected by Temperature	40°C (104°F)	103%
	25°C (77°F)	100%
	0°C (32°F)	86%
Self Discharge	GEL series batteries may be stored for up to 9 months at 25°C(77°F) and then a freshening charge is required. For higher temperatures the time interval will be shorter.	



Typical Applications

- ◆ Railway and marine systems
- ◆ Electric tools
- ◆ Vehicle in place of walking
- ◆ Lawn mowers
- ◆ Golf trolleys and golfcart
- ◆ Electric toys
- ◆ Portable power
- ◆ Wheelchairs
- ◆ Medical equipments.



Constant Current Discharge (Amperes) at 25 °C (77°F)

F.V/Time	10min	15min	20min	30min	45min	1h	2h	3h	4h	5h	6h	8h	10h	20h
1.85V/cell	42.9	37.2	33.4	26.6	20.2	16.9	10.6	7.99	6.54	5.60	4.86	3.92	3.33	1.85
1.80V/cell	51.5	42.9	38.0	29.6	22.7	18.8	11.5	8.62	7.01	5.95	5.16	4.14	3.50	1.90
1.75V/cell	59.8	48.9	42.2	32.2	24.2	19.9	12.1	9.02	7.29	6.14	5.32	4.24	3.55	1.93
1.70V/cell	66.4	53.2	45.3	34.2	25.3	20.8	12.7	9.33	7.50	6.32	5.47	4.33	3.61	1.96
1.67V/cell	71.1	55.9	47.3	35.5	26.3	21.5	13.0	9.60	7.67	6.47	5.57	4.40	3.67	1.98
1.60V/cell	77.5	59.8	50.6	37.6	27.8	22.5	13.5	9.92	7.90	6.64	5.70	4.46	3.73	2.00

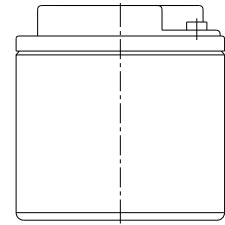
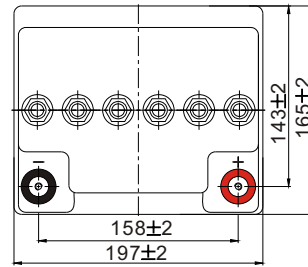
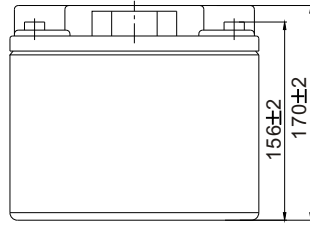
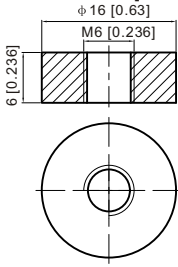
Constant Power Discharge (Watts) at 25 °C (77°F)

F.V/Time	10min	15min	20min	30min	45min	1h	2h	3h	4h	5h	6h	8h	10h	20h
1.85V/cell	80.6	70.3	63.8	51.1	39.2	32.8	20.7	15.6	12.8	11.0	9.62	7.79	6.62	3.70
1.80V/cell	95.4	80.1	71.6	56.3	43.7	36.3	22.4	16.8	13.7	11.7	10.2	8.19	6.95	3.79
1.75V/cell	109.0	90.1	78.8	61.0	46.3	38.3	23.4	17.5	14.2	12.0	10.5	8.38	7.05	3.84
1.70V/cell	119.3	97.1	83.8	64.2	48.1	39.8	24.4	18.1	14.6	12.3	10.7	8.55	7.16	3.90
1.67V/cell	126.3	100.9	86.7	66.2	49.7	41.0	25.0	18.6	14.9	12.6	10.9	8.67	7.27	3.94
1.60V/cell	135.2	106.4	91.8	69.4	52.1	42.7	25.8	19.1	15.3	12.9	11.1	8.78	7.37	3.97

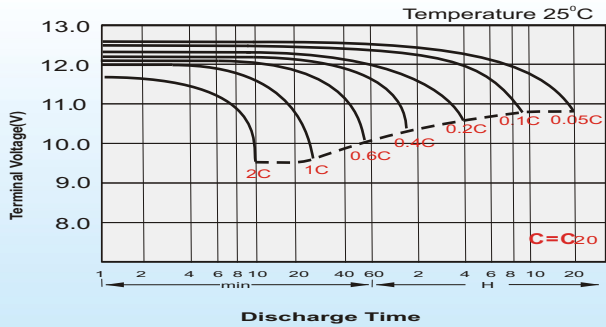
Dimensions

T6 Terminal

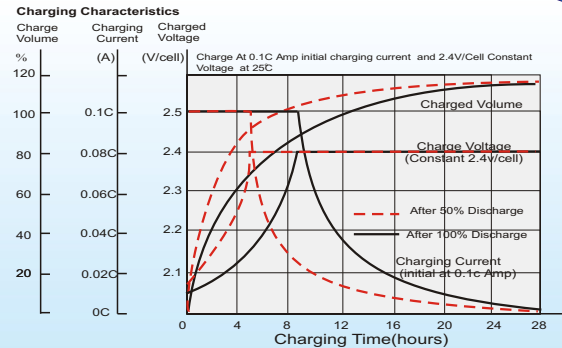
Unit: mm [inches]



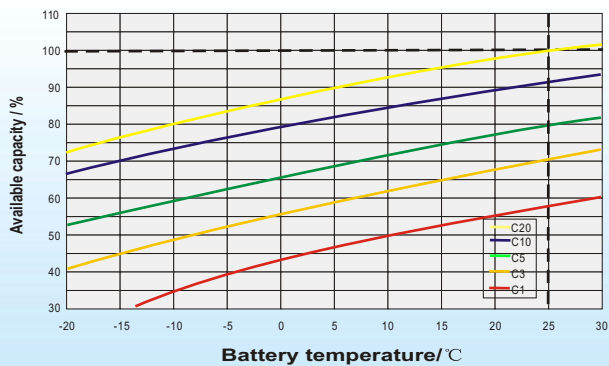
Discharge Characteristics



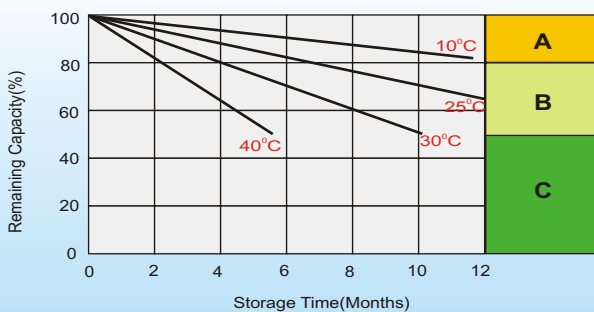
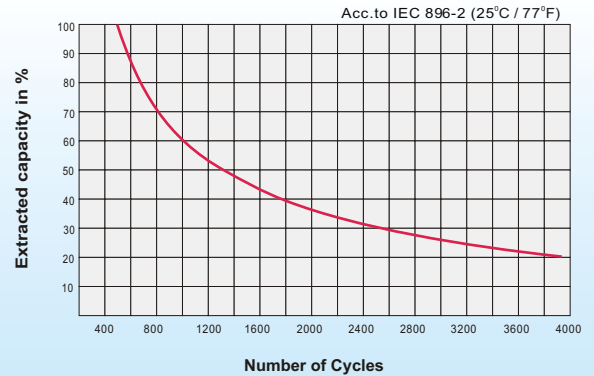
Charging Characteristics (cycle use)



Temperature Effects in Relation to Battery Capacity



Cycle Life in Relation to Depth of Discharge



Self Discharge Characteristics

- A** No supplementary charge required
(Carry out supplementary charge before use if 100% capacity is required.)
- B** Supplementary charge required before use. Optional charging way as below:
 1. Charged for above 3 days at limited current 0.25CA and constant volatge 2.25V/cell.
 2. Charged for above 20hours at limited current 0.25CA and constant volatge 2.45V/cell.
 3. Charged for 8-10hours at limited current 0.05CA .
- C** Supplementary charge may often fail to recover the capacity.
The battery should never be left standing till this is reached.

Sales Office

Sweden

Cell tech AB,
Äggelundavägen 2, 175 12 Järfälla, Sweden
TEL: +41 8 445 7870
FAX: +41 8 445 7878
E-mail: order@celltech.se
www.celltech.se

Finland and Baltic countries

Celltech oy
Höyläämötie 11A, 00380 Helsinki, Finland
TEL: +358 (0)207 9991 40
FAX: +358 (0)207 9991 41
E-mail: info@celltech.fi
www.celltech.fi

Denmark

Celltech A/S
Lejrvej 25, 3500 Vaerloese Denmark
TEL: +45 7025 2201
FAX: +45 7025 2202
E-mail: info@celltech.dk
www.celltech.dk