

Specification

Code:460-8665

Nominal Voltage	12V
Watts(15min Rate)	783.3 Watte at 1.67V/cell
Dimension	Length 522±3mm (20.55 inches)
	Width 268±3mm (10.55 inches)
	Container Height 220±3mm (8.66 inches)
	Total Height (with Terminal) 226±3mm (8.90 inches)
Approx Weight	Approx 72.5 kg (159.9lbs)
Terminal	T11
Container Material	ABS
Rated Capacity	258.0 AH/25.8A (10hr, 1.80V/cell, 25°C/77°F)
	250.0AH/31.3A (8hr, 1.80V/cell, 25°C/77°F)
	218.0 AH/43.6A (5hr, 1.75V/cell, 25°C/77°F)
	198.0 AH/66.0A (3hr, 1.75V/cell, 25°C/77°F)
	165.5 AH/165.5A (1hr, 1.60V/cell, 25°C/77°F)
Max. Discharge Current	2500A (5s)
Internal Resistance	Approx 2.5mΩ
Operating Temp. Range	Discharge : -15~50°C (5~122°F)
	Charge : 0~40°C (32~104°F)
	Storage : -15~40°C (5~104°F)
Nominal Operating Temp. Range	25±3°C (77±5°F)
Cycle Use	Initial Charging Current less than 75.0A. Voltage 14.4V~15.0V at 25°C(77°F)Temp. Coefficient -30mV/°C
	No limit on Initial Charging Current Voltage 13.5V~13.8V at 25°C(77°F)Temp. Coefficient -20mV/°C
Standby Use	
Capacity affected by Temperature	40°C (104°F) 103%
	25°C (77°F) 100%
	0°C (32°F) 86%
Self Discharge	Leoch LPX series batteries may be stored for up to 6 months at 25°C(77°F) and then a freshening charge is required. For higher temperatures the time interval will be shorter.



Applications

- ◆ UPS (High rate)
- ◆ High power backup supply
- ◆ Emergency power supply
- ◆ Starting system
- ◆ Power tools
- ◆ Emergency lighting
- ◆ Electric starting



Constant Current Discharge (Amperes) at 25 °C (77°F)

F.V/Time	10min	15min	20min	30min	45min	1h	2h	3h	4h	5h	6h	8h	10h	20h
1.85V/cell	363.0	335.0	288.0	222.5	168.3	137.0	83.4	60.8	48.1	40.2	35.7	29.9	25.0	12.9
1.80V/cell	409.5	374.0	317.3	237.5	180.7	147.8	88.9	64.6	50.7	42.5	37.7	31.3	25.8	13.4
1.75V/cell	444.0	392.7	330.8	246.5	186.7	153.5	91.1	66.0	52.3	43.6	38.4	31.6	26.1	13.5
1.70V/cell	469.5	419.2	348.0	253.0	192.3	158.0	92.8	67.6	53.4	44.4	39.1	31.8	26.5	13.6
1.67V/cell	\	442.1	360.8	262.5	197.0	162.0	94.6	68.4	54.3	45.2	39.7	32.2	26.7	13.7
1.60V/cell	\	461.0	371.3	267.5	200.3	165.5	96.3	69.8	55.4	45.8	40.1	32.5	26.9	13.8

Constant Power Discharge (Watts/cell) at 25 °C (77°F)

F.V/Time	10min	15min	20min	30min	45min	1h	2h	3h	4h	5h	6h	8h	10h	20h
1.85V/cell	670.5	625.1	542.9	424.1	325.2	267.5	165.9	121.5	96.4	80.9	72.0	60.4	50.7	26.2
1.80V/cell	747.5	688.5	589.2	445.7	346.5	287.2	176.3	128.6	101.3	85.2	75.6	63.0	52.0	27.0
1.75V/cell	797.5	714.0	608.4	458.8	356.7	297.6	180.2	130.9	104.0	87.0	76.9	63.5	52.4	27.1
1.70V/cell	824.2	751.7	635.3	468.3	367.0	305.4	182.9	133.7	105.9	88.4	78.0	63.7	53.0	27.3
1.67V/cell	\	783.3	653.7	481.9	372.7	311.9	185.9	135.1	107.6	89.7	79.0	64.3	53.4	27.5
1.60V/cell	\	806.7	665.4	487.7	374.6	316.1	188.4	137.3	109.3	90.6	79.7	64.7	53.7	27.6

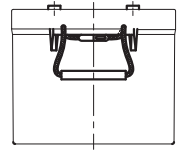
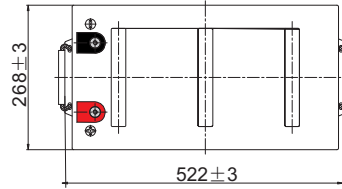
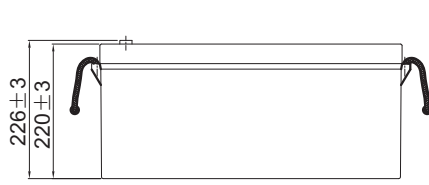
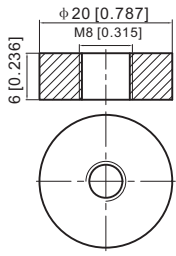
Specifications subject to change without notice.



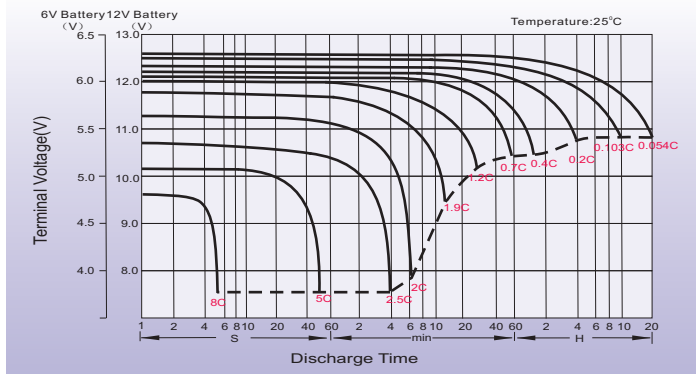
Dimensions

T11 Terminal

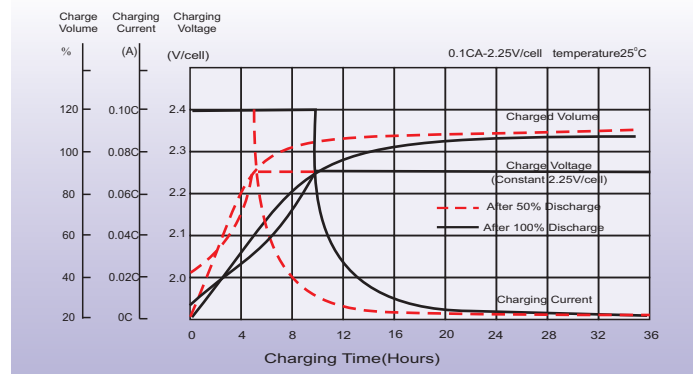
Unit: mm [inches]



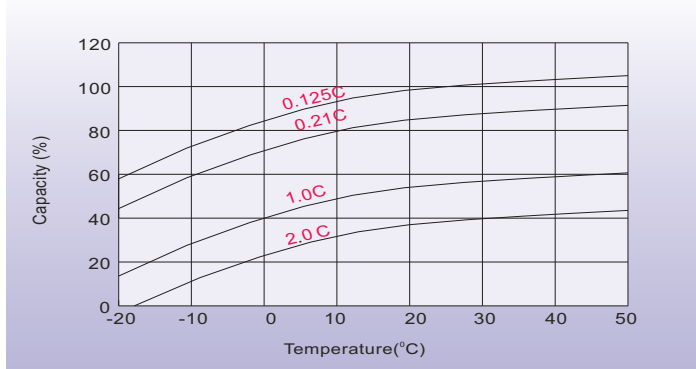
Discharge Characteristics



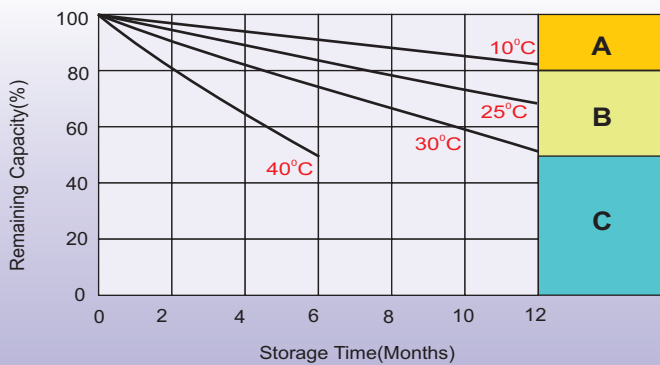
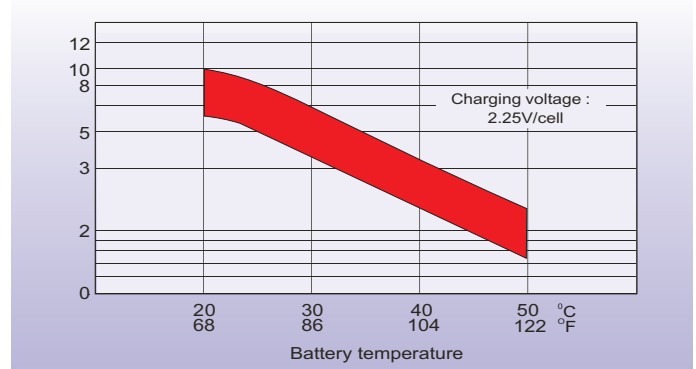
Float Charging Characteristics



Temperature Effects in Relation to Battery Capacity



Effect of Temperature on Long Term Float Life



Self Discharge Characteristics

- A** No supplementary charge required
(Carry out supplementary charge before use if 100% capacity is required.)
- B** Supplementary charge required before use. Optional charging way as below:
 1. Charged for above 3 days at limited current 0.25CA and constant voltage 2.25V/cell.
 2. Charged for above 20 hours at limited current 0.25CA and constant voltage 2.45V/cell.
 3. Charged for 8-10 hours at limited current 0.05CA.
- C** Supplementary charge may often fail to recover the capacity.
The battery should never be left standing till this is reached.

Sales Office

Finland and Baltics
Celltech Oy
Sinimäentie 6
02630 Espoo
Finland
TEL: +358 (0) 207 999 640
E-mail: info@celltech.fi
www.celltech.fi

Sweden
Celltech Abatel AB
Färögatan 33
164 51 Kista,
Sweden
TEL: +46 (0) 8 445 78 70
E-mail: info@celltech.se
www.celltech.se

Denmark
Celltech A/S
Lejrvej 25
3500 Vaerloese,
Denmark
TEL: +45 7025 2201
E-mail: info@celltech.dk
www.celltech.dk

Norway
Staubo Elektro-Maskin AS
Bjoernerudveien 12 C
1266 Oslo
Norway
TEL: +47 22 75 35 00
E-Mail: post@staubo.no
www.staubo.no